

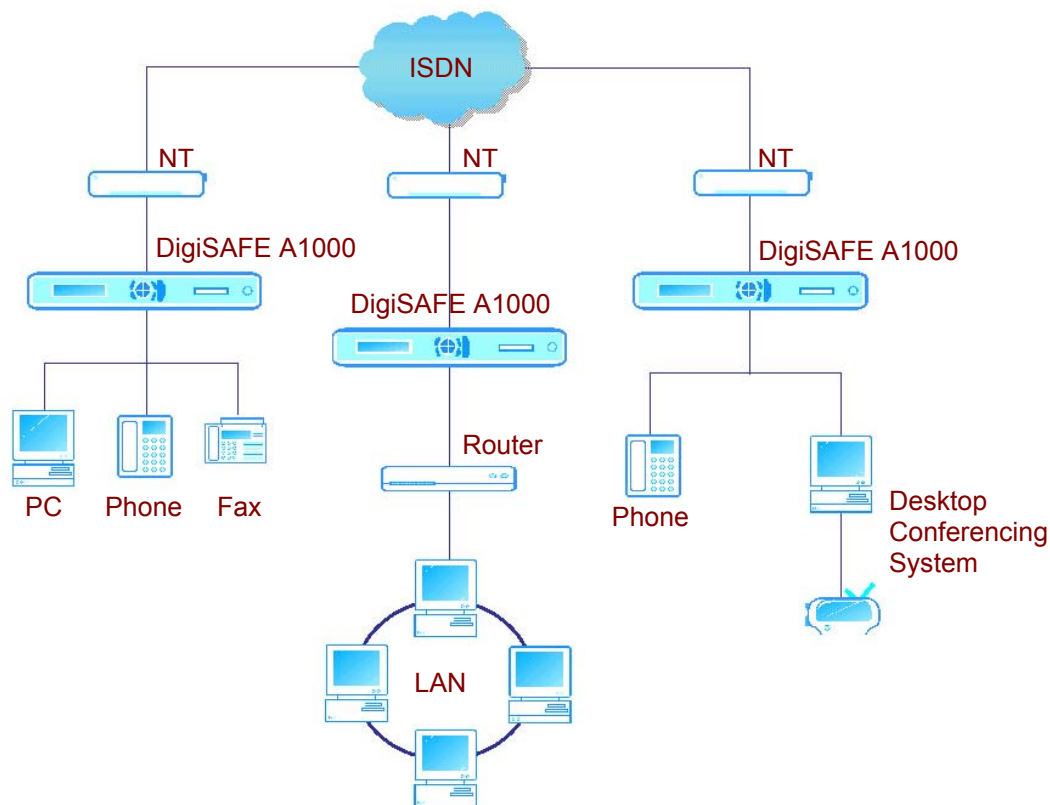
DigiSAFE A1000

- Supports strong encryption algorithms (3DES or SAFER)
- Supports ETS 300-012, ITU-T I.430 & ANSI T1.605 S/T interface
- Multiple Connections to TE
- Unique DigiSAFE's BISS synchronization technique
- Independent B-Channels encryption
- D-channel transparent



DigiSAFE A1000 ISDN Line Encryptor provides B-channel encryption of ISDN Basic Rate Interfaces for data transmission through all ISDN-based phone, fax as well as video conferencing. Its independent encryption of the B-channels contents ensures full flexibility of the ISDN network. With S/T interface, a total of 4 X RJ45 connectors will be available, whereby one is for the public network and the other three for internal connections to terminal equipment such as fax, telephone, router and ISDN cards.

DigiSAFE A1000 protects your sensitive data by employing 168-bit Triple-DES or 128-bit SAFER-SK128 encryption algorithm. To maximum security, a unique proprietary authentication scheme for symmetric key exchanges is used. For each ISDN call, a new traffic key, different for each B-channel, will be allocated.



Specifications

General

- Unique DigiSAFE's BISS synchronization technique
- Independent B-Channels encryption
- D-channel transparent
- Battery back-up of key variables
- Front panel menu-driven setup with back lit LCD

Interface Options

- Conforms to ETS 300-012, ITU-T I.430
- ANSI T1.605 S/T interface
- 1 x S0 (BRI) RJ45 for NT
- 3 x S0 (BRI) RJ45 for TE
- 1 x RS232C 9 pin D-Sub connector for monitoring and control (optional)
- Front Panel Smart Card Reader

Diagnostic

- Automatic power up self-tests
- Local loop back tests
- On-line encryption fault detection
- Remote Monitoring (optional)
- Alarm log messages stored in memory with date & time
- LED indicators for link status

Cryptographic

- 168-bit 3DES or SAFER-SK128 or Customized Algorithm
- Customized algorithm loading through reader port

Security

- Tamper resistance chassis design
- Pick-Resistant lock

Key Management

- Proprietary Symmetric Private key Exchange

Operating Environment

- Operating temperature : 0°C to +50°C
- Relative humidity : 0-90%
- Meets FCC Part 15, subpart J (Class B) EMI requirements

Electrical & Mechanical

- Mains : 110 / 230 VAC 60/50Hz Conforms to IEC 65
- Dimension : 420(W)x 44.5(H) x 270(D) (mm)
- Weight : <5.5kg

© 2001 All rights reserved. All DigiSAFE trademarks are property of DigiSAFE Pte Ltd. Specifications are subject to change without notice.

DigiSAFE Pte Ltd
100 Jurong East Street 21
Singapore 609602
Tel: +65-568 7118
Fax: +65-568 7226
Email: info@digisafe.com
URL: www.digisafe.com

DIGISAFE
SECURING THE E-ECONOMY